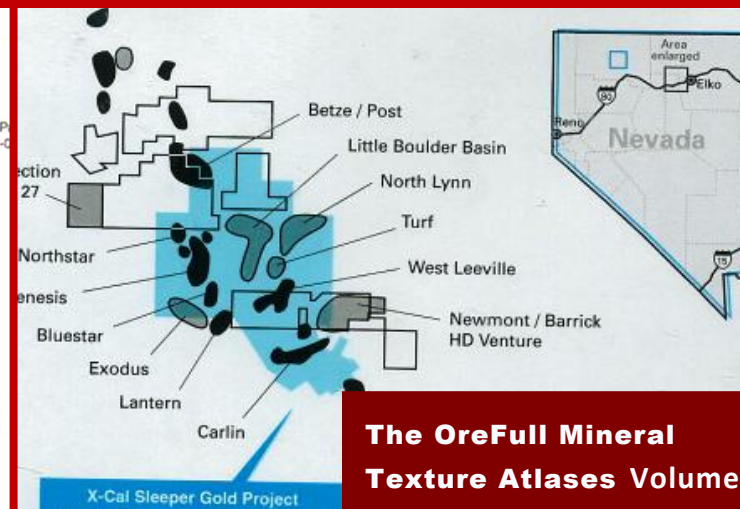
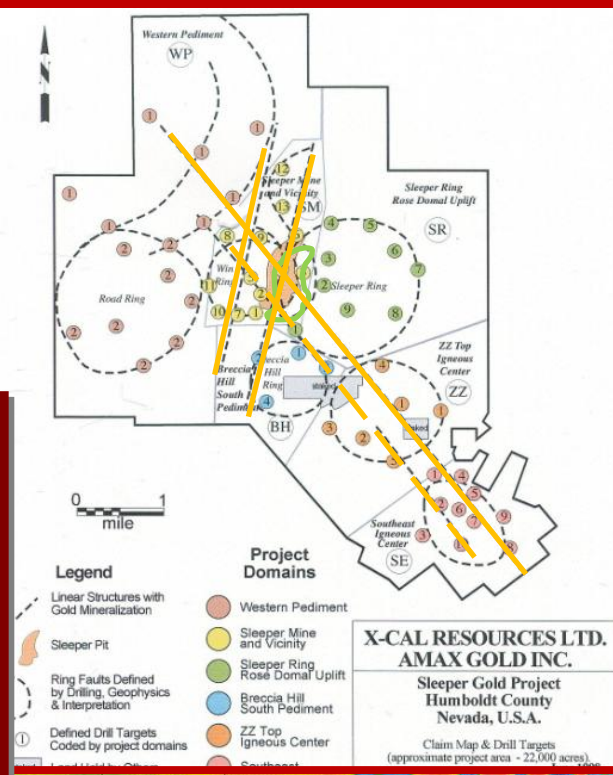


80 km

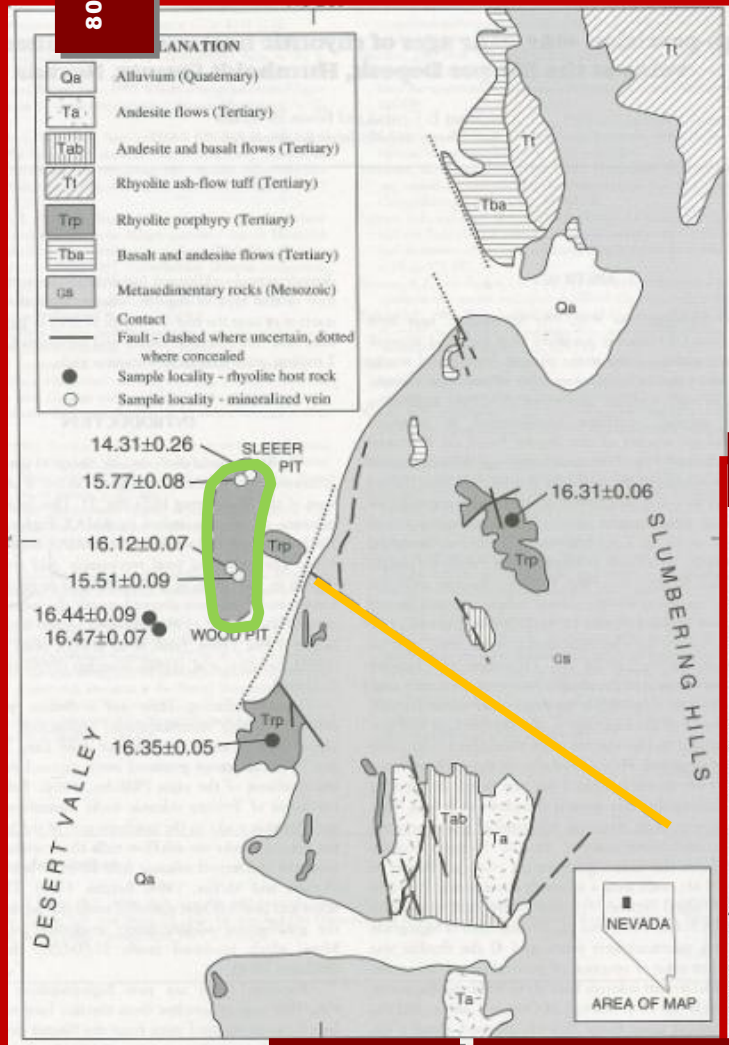


X-Cal Sleeper Gold Project  
Humboldt County, Nevada, U.S.A.  
Approx. project area - 20,000 acres

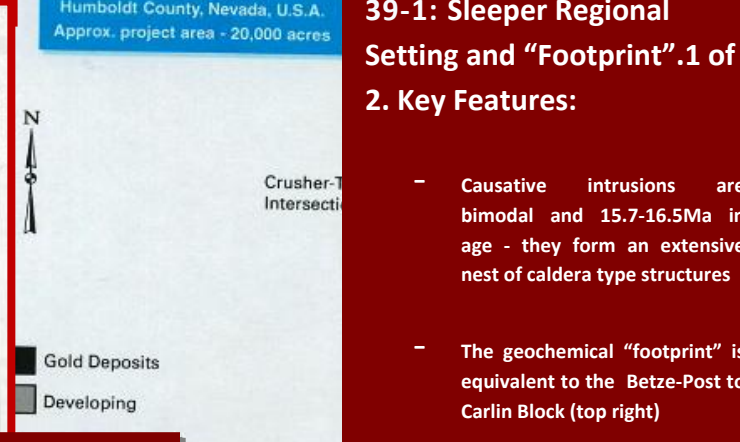


**The OreFull Mineral Texture Atlases Volume 39-1: Sleeper Regional Setting and "Footprint".1 of 2. Key Features:**

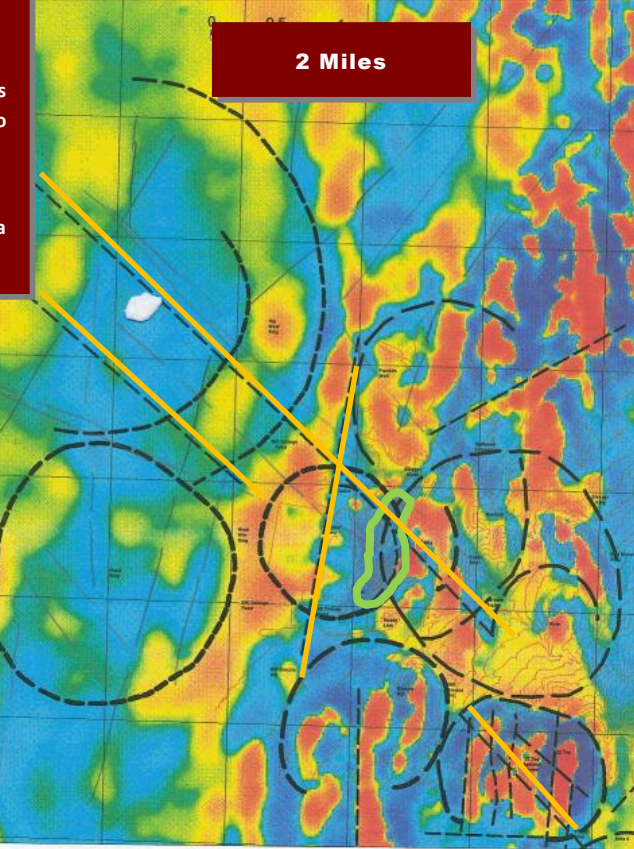
- Causative intrusions are bimodal and 15.7-16.5Ma in age - they form an extensive nest of caldera type structures
- The geochemical "footprint" is equivalent to the Betze-Post to Carlin Block (top right)
- The Sleeper deposit is in a subtle magnetic low.



2km



5 Miles



2 Miles