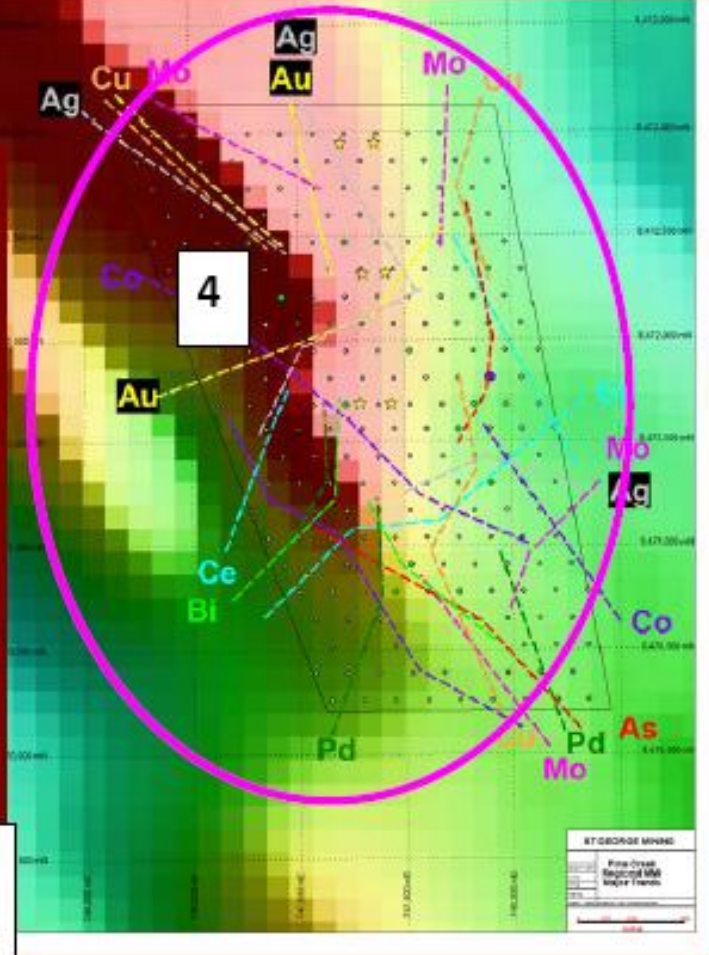
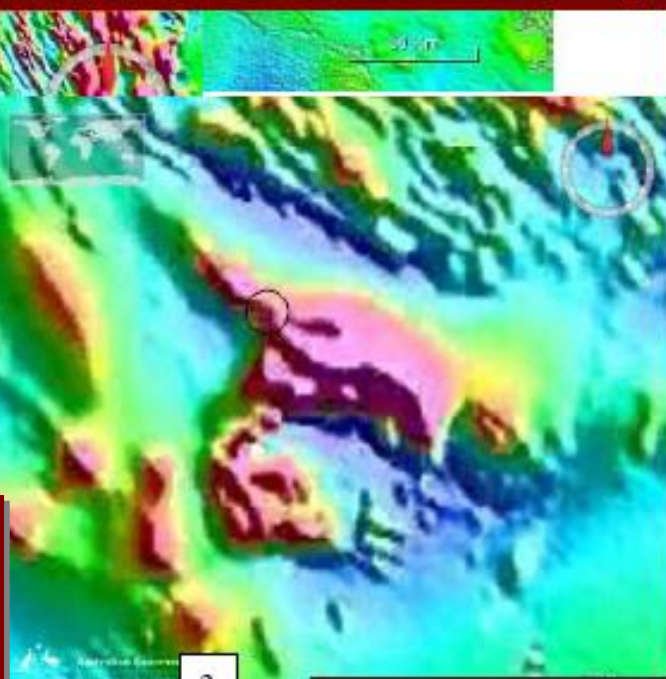
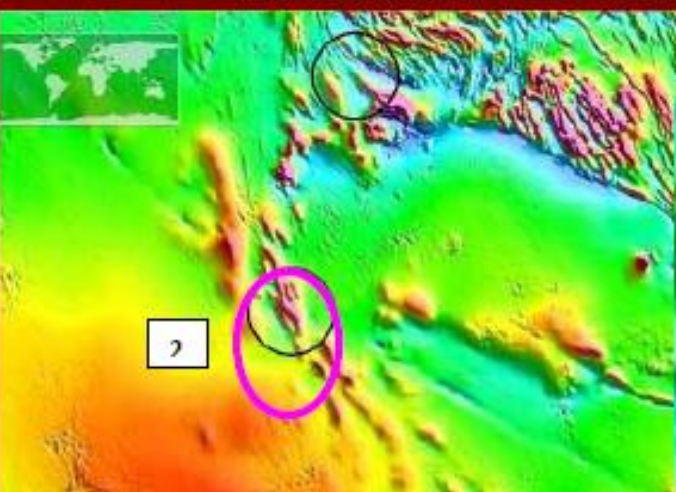
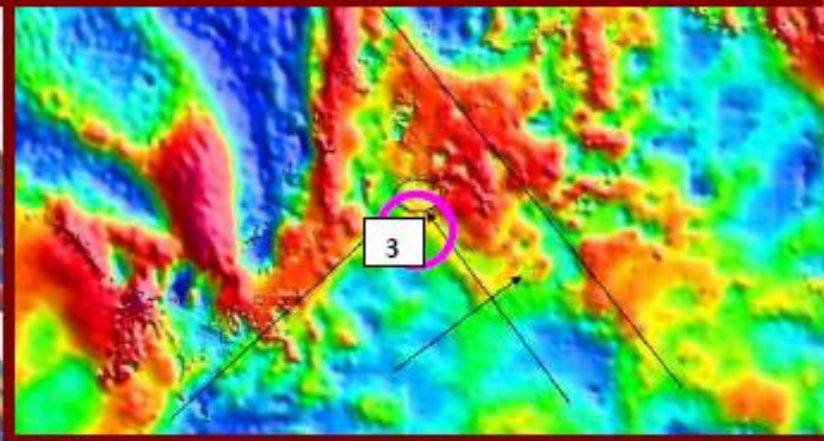
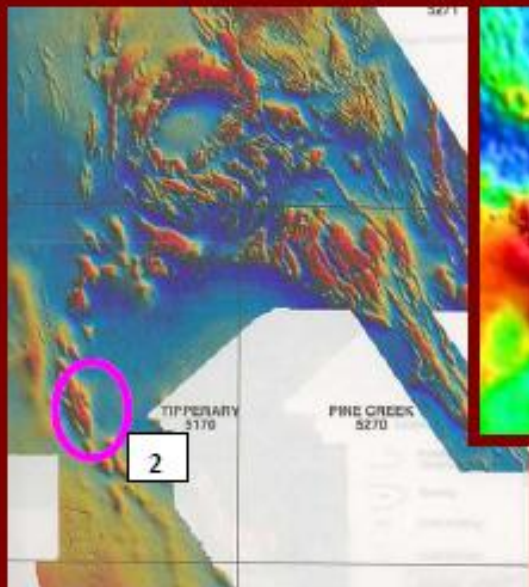
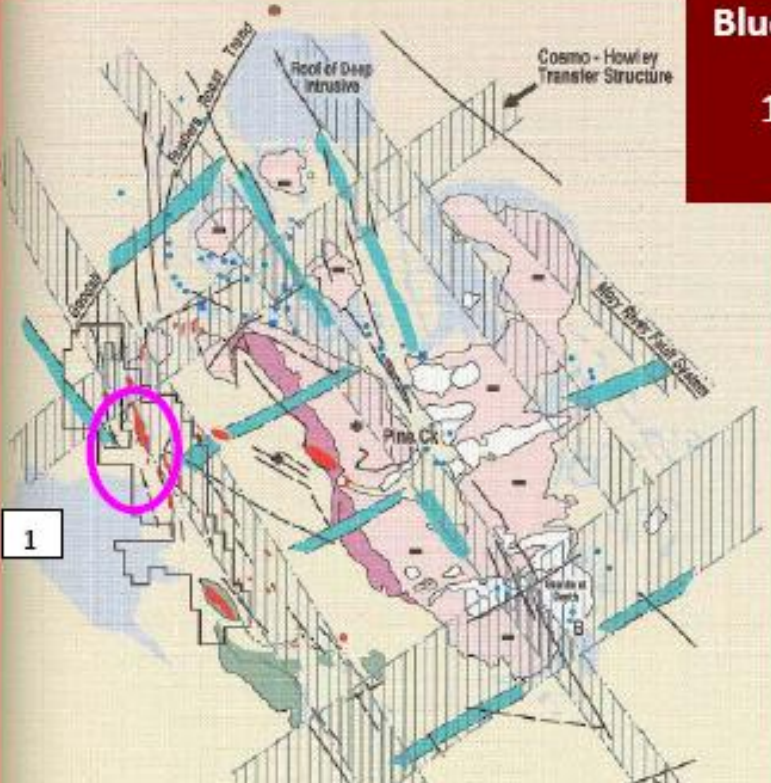


Blue Ant –Fenton Regional Setting

1- Blue Ant Gold Discovery 2- magnetic imagery -!-3 (World Geoscience) World Wide Mapper (AGSO-NASA 2012) – gravity 4- MMI partial Leach on magnetics 2013.



The OreFull Mineral Texture Atlases
 Volume 43- 4 : Blue Ant –Fenton Gold
 Target . Details increase in a clockwise
 direction from the upper left.

FEND 14-18 Gold
 Zone

The regional geophysical setting is illustrated below .The data has been processed by World Wide Wind (a AGSO /NASA Joint venture – post 2004) enabling various degrees of gravity and magnetics to be superposed and draped in various ratios across each other .This is a very powerful tool for depicting the major crustal and continental scaled fracture zones, blind cratons and batholiths and the architecture of a province.

In the illustration below we can clearly identify the Pyrrhotite Member (of the Koolpin Formation) .Image 3 (upper right side) we see the continental scaled gravity field with the Pine Creek Shear Zone and the Blue Ant-Fenton Shear corridor transgressed by crustal scaled NE trending sutures (perhaps transform structures).The Fenton drill prospects depicted are approximately at the intersection of the NNW and NE structures in gravity.